

Fixing lake-elevation data with OSM and heightmaps

Prerequisites

- Qgis 3
- QuickOSM plugin for Qgis 3
- Downloaded heightmap of the area in DEM format
- MSFS Developer mode enabled
- Some basic knowledge of the MSFS SDK (even though I will repeat a lot of the documentation in this document)
- MSFS-attribonly shapefile

For Norway: hoydedata.no with the following settings:



Eksport Landsdekkende

Egendefinert eksport av høydedata

Velg område

Tegn polygon ▾

Velg produkt

Høydmodell ▾

Velg type

Nasjonal høydmodell ▾

Velg datasett

DTM 10 ▾

Filformat **Kompresjonsmetode**

USGS DEM ▾ Ingen ▾

Koordinatsystem

UTM 32 ▾

Filoppdeling

Som datasett ▾

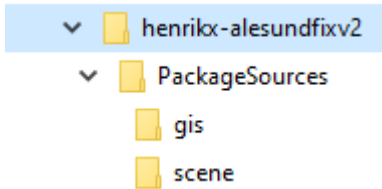
☐ Angi egendefinert NoData verdi

Klargjør bestilling

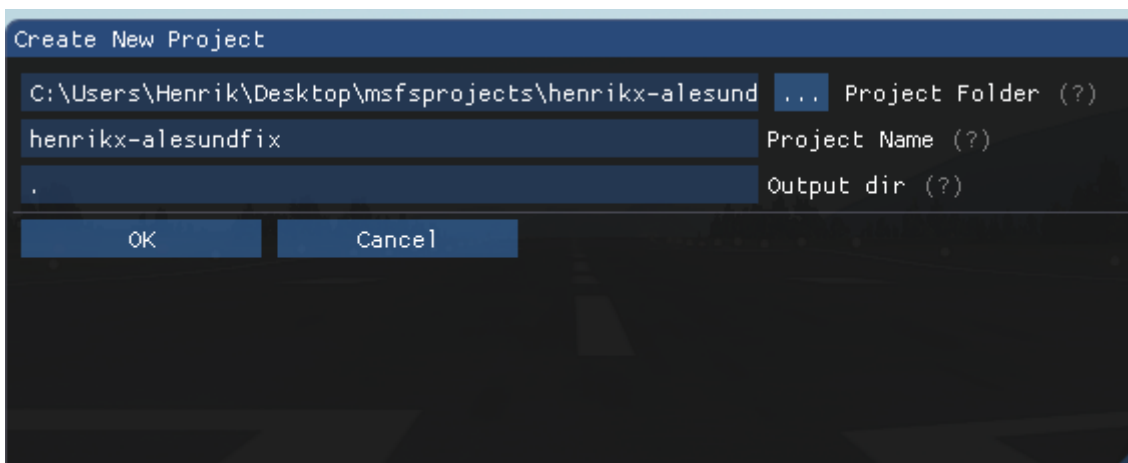
Preparations

Preparing project structure

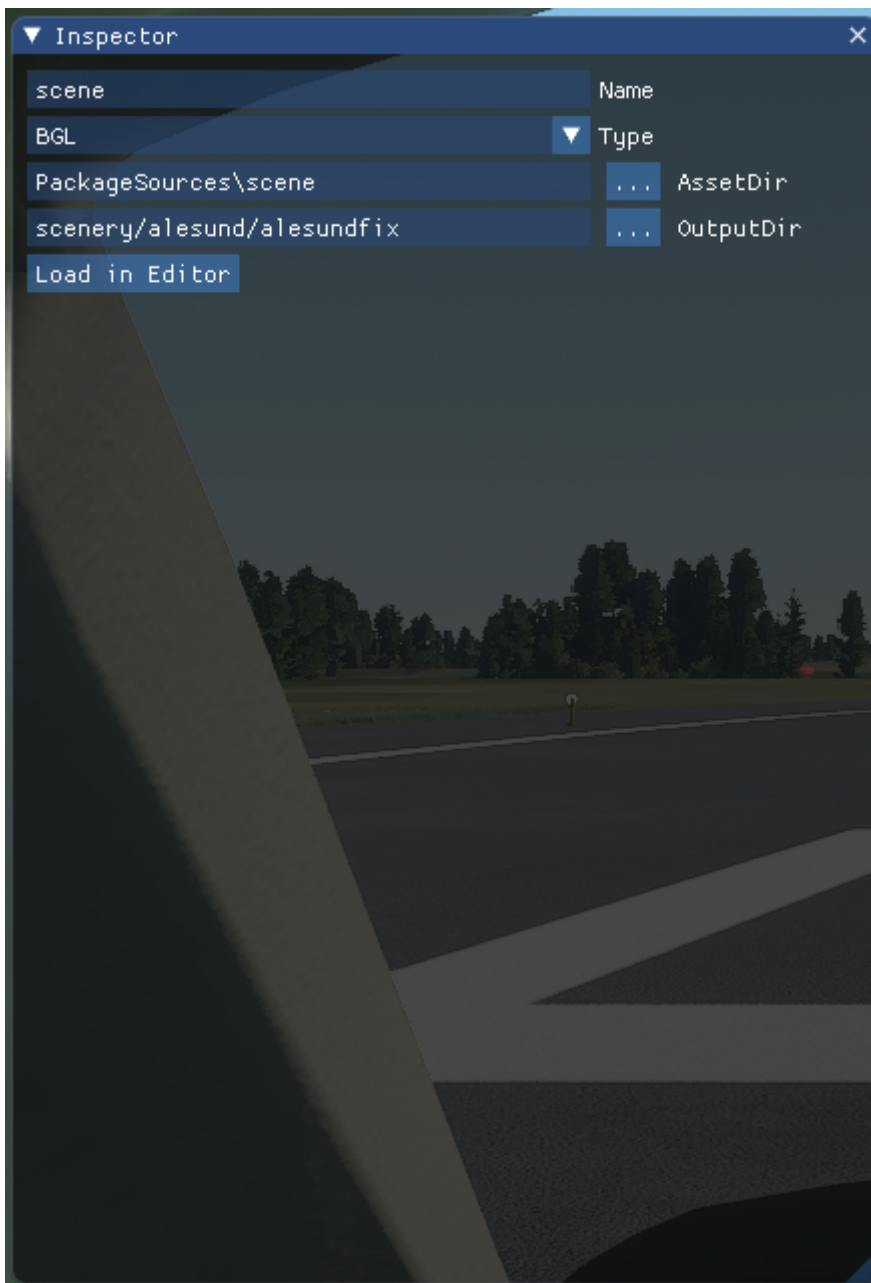
- Open MSFS with developer mode enabled and start a flight in the area you wish to fix. For this example I will use Ålesund
- While it is loading, create a folder in the following format: `<author>-<projectname>`. This will be your project root.
- Inside the project root create a folder called "PackageSources" with the two subfolders "gis" and "scene". Your structure should look like below:







- When MSFS has loaded, create a new project
 - Click the [Dev-Mode] button on the toolbar
 - Select new project
 - In the dialog box type the name as the folder name you made earlier. Also select the project directory (the directory you created earlier) as the project root. Output dir does not have to be changed



- Once created, click the + button to add a placeholder package, which will contain the scenery fixes.
 - Package Name should be the same as your project-name
 - Type should be BGL
- When you've added the package, you will be able to edit some details about it. Type in various details, such as Thumbnail, Content-Type and Title
- Click the edit button next to the asset-group. The name should be changed into "scene". Asset dir should be set to `PackageSources\scene`
- Output dir refers to where the sim will load the addon into it's internal memory (Virtual File System). For sceneries, this must be inside `scenery/`. You should, however add a few subdirectories. I like this format: `scenery/<area-name>/<package-name>`.



- Click the "Load in Editor" button.
- Add a completed Polygon. It does not matter where or what, because we will overwrite it later anyways.
- Click "Save Scenery". The Scenery Editor will ask you where to save it. Select `<project-root>/PackageSources/scene/terrain`.
- You should now see the below generated files in the directory

Desktop > msfsprojects > henrikx-alesundfixv2 > PackageSources > scene					▼	🔄	🔍
Name		Date modified	Type	Size			
 terrain.dbf		31.08.2020 10:58	DBF File	2 KB			
 terrain.shp		31.08.2020 10:58	SHP File	1 KB			
 terrain.shx		31.08.2020 10:58	SHX File	1 KB			
 terrain.xml		31.08.2020 10:58	XML Document	5 KB			

- Save the project.

Creating the scenery

- Open Qgis
- Once in Qgis, create a new project. Save the project as `<project-root/PackageSources/gis/gis.qgz` (You may of course change the name to whatever you like). This directory will be your GIS project folder. This is where you should save all your layers.
- Copy the heightmaps you downloaded to this directory for easy access.

Add and filter geodata



Preparing heightmaps

- Import the heightmaps by clicking `Layer > Add Layer > Add Raster Layer...` Then select the heightmaps and click "Add".
- (if you have more than one heightmap) Merge the rasters by clicking `Raster > Miscellaneous > Merge`. Select the layers and click Merge. You should now remove the split files from the project.
- Save the merged heightmap by `Right Clicking the Layer > Export > Save as...` Save it in your project directory as a GeoTIFF. Select the CRS epsg:4326 - wgs84. Give it any name you like, but I will be calling it `wgs84heightmap`. Remove the temporary Merged layer.

Automatic method

After you have imported and merged your heightmap, I have developed a method to do all the manual steps found below automatically using a QGIS Model.

First download this model file: <https://docs.takset.net/attachments/4>

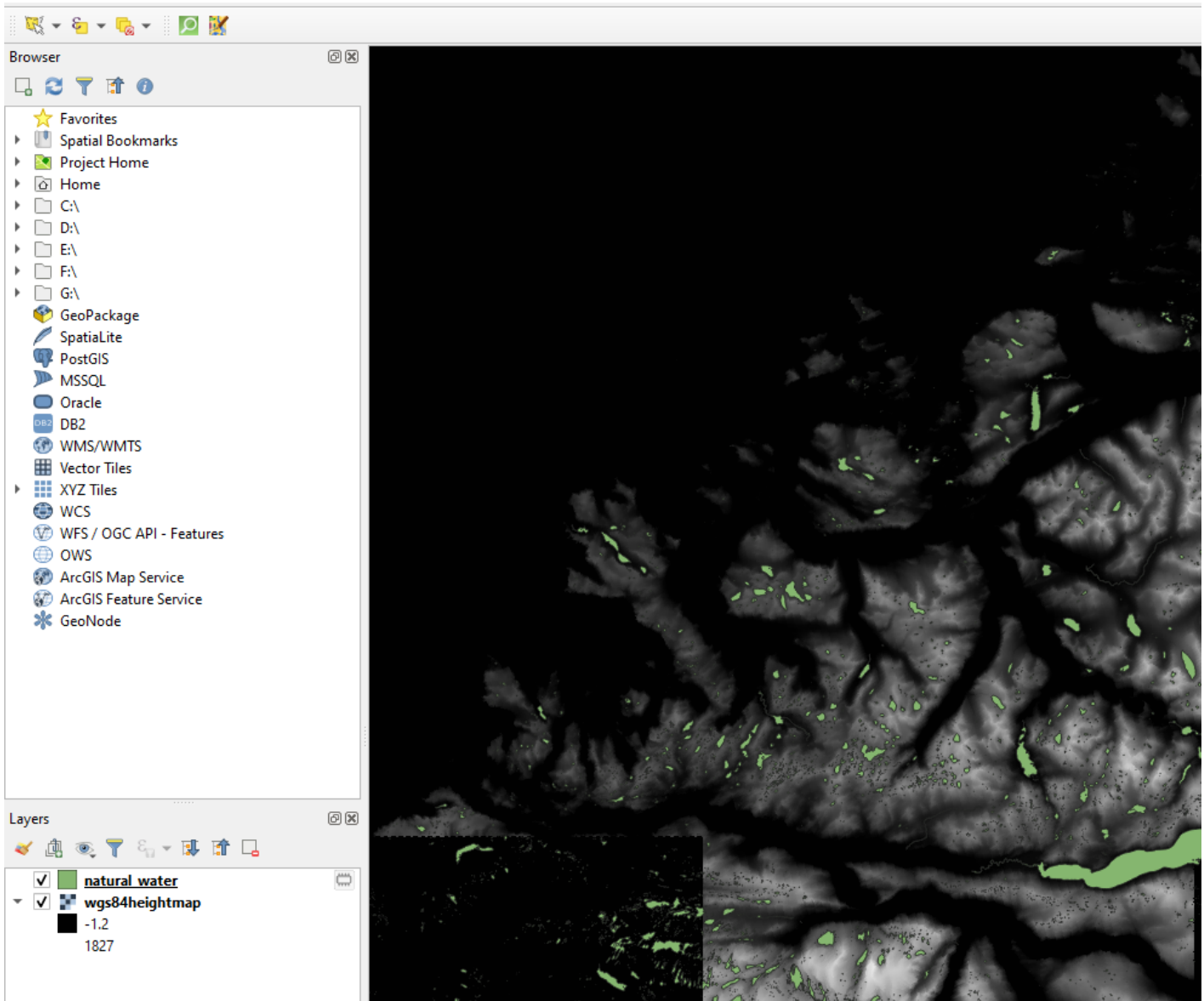
To use it, open `Processing > Graphical Modeler`. Open  the file you downloaded. When it is open you can click the Run  button. Select the merged heightmap and click Run again. It will run through all the steps for you. Unless you changed it's name in the parameters window (the window where you selected your heightmap), the layer to export (see Export scenery sources) will

be called `msfs-scenery` .

Manual method

Preparing OSM water-polygons




- Download water-lake-data with QuickOSM. To do this click `Vector > QuickOSM > QuickOSM...` Use Key `natural` and Value `water` . Select "Layer Extent" and then select the saved heightmap.
- Remove all the imported layers except the Vector Multi-Poly layer
- Your map should now look something like this:

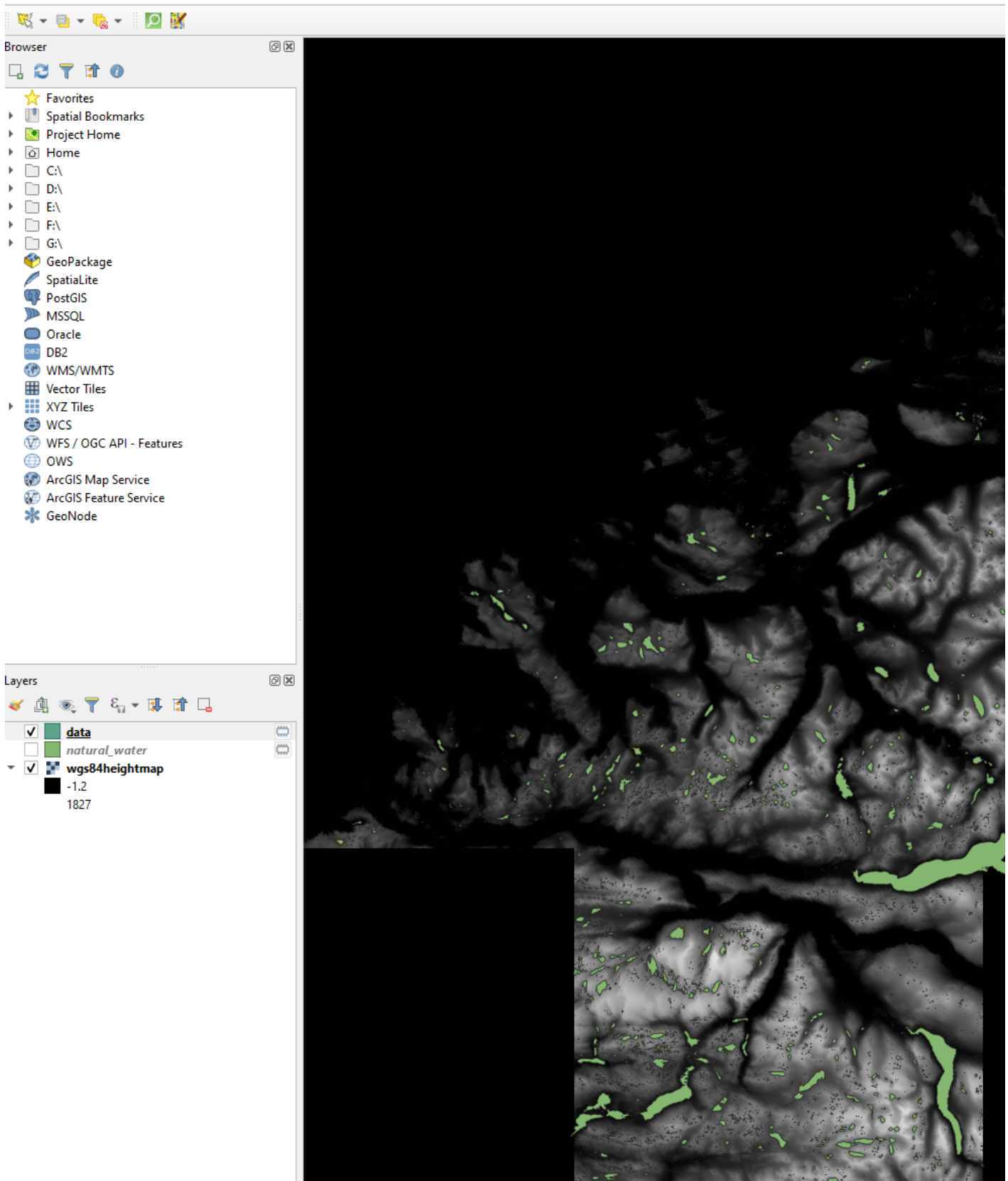


- We're now at a stage where we have the polygons for all the lakes in the area and the height data at those lakes, but we need to filter out some polygons that are not applicable and will mess things up in the future.
- Duplicate the `natural_water` layer, so that we can always go back. You can call the duplicated layer "data".
- Select the "data" layer and go to `Edit > Select > Select by Expression...` .

- For the expression type

```
raster_value(' layername' , 1, make_point( x( $geometry) , y( $geometry) ) ) = 0
```

- Replace the ' layername' argument by selecting that text and double clicking **Map Layers > wgs84heightmap** (or whatever you called it). Click **Select Features**.
- Click the Edit  button to allow editing the layer
- You will now have all polygons where the heightmap is black selected. Delete all those by clicking the Delete button .
- We must now delete all the polygons which is outside of the heightmap-area. To do this change the `= 0` part of the expression to `is null` and repeat the previous step.
- We must now remove all the rivers. Flattening rivers might lead to some interesting results...
- Go to **Edit > Select > Select Features by Value...**. In the **water** field type "river". Then repeat the deletion step.
- Click the Edit button  again to stop editing and answer yes to save.
- Your map should now look like this: (Notice how the lakes outside of the heightmap area has been removed.)

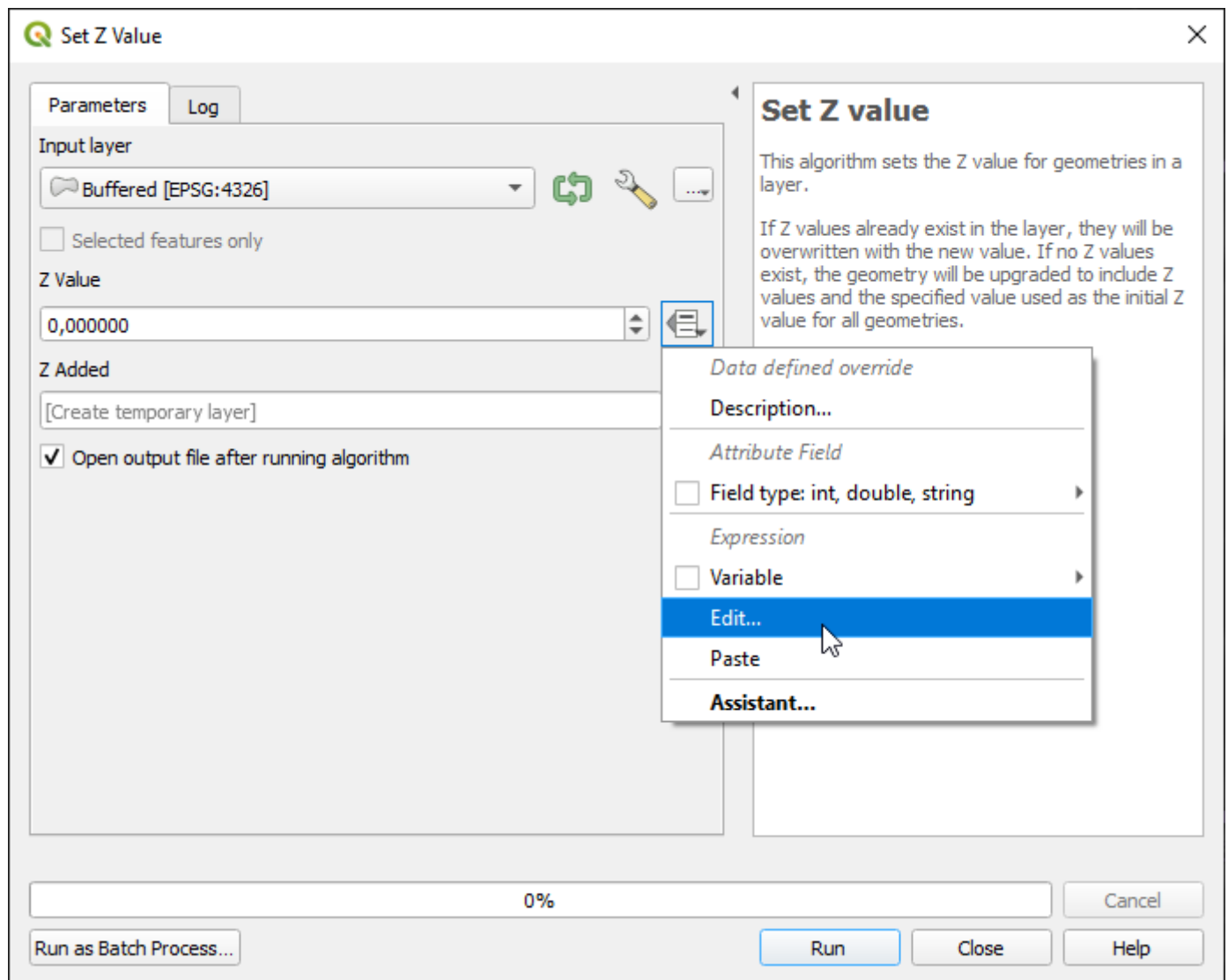


- Save the data by Right Clicking the Layer > Export > Save Features as.... Select ESRI Shapefile and call it "data" (once again call it whatever you like). After saving, remove the temporary layer, so that you only have the saved layer open. This save operation also fixes a few compatibility issues with the OSM data, therefore it is important.
- Usually the terrain is also broken a few meters around the lakes, so we need to increase the size of all the polygons a little bit. We can do this by using "Buffer". Select the "data" layer.

Go to `Vector > Geoprocessing Tools > Buffer...`. For distance, I've found a good value to be `0,0006`. All other values can be set to default, as the accuracy is not that important.

Adding height data

- Next, we need to add the height data to the polygons. We can do this with the "Set Z value" algorithm. To find it, you need to enable the "Processing Toolbox". Do this by clicking `View > Panels > Processing Toolbox`. Next click the following:






- In the expression box, type

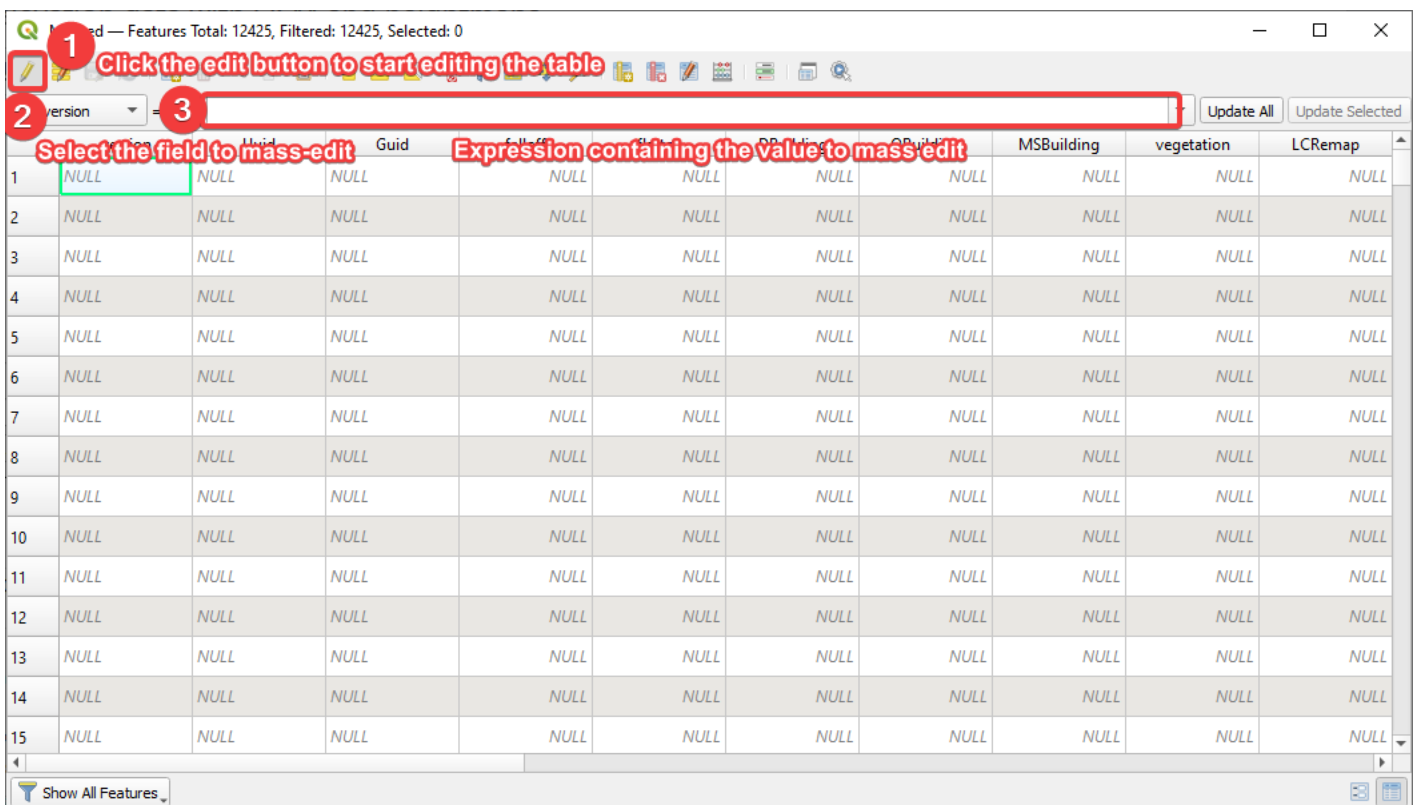
```
raster_value(' layername' , 1, make_point( x( $geometry ) , y( $geometry ) ) )
```

- Once again, replace the `' layername'` argument by selecting that text and double clicking `Map Layers > wgs84heightmap` (or whatever you called it). Then click `Ok` and then `Run`.

Adding MSFS SDK Data

- The proper data needs to be added, so that MSFS knows what to do with all these polygons.

- To do this we must first set the correct fields to the layer. Right click **Z Added** and select **Properties**. In this window select **Fields**. Click the Edit  button, then press **CTRL+A** and then Delete Field button  to remove all the fields added by OSM. Remember to uncheck the Edit button, to save the changes to the layer.
- Import the msfsattronly shapefile, by clicking **Layer > Add > Add Vector Layer...**. This file contains only the field structure of an MSFS scenery source shapefile.
- What we need to do is merge this layer with the layer containing our polygons. That will automatically put all the required fields into our polygons layer. To do this click **Vector > Data Management Tools > Merge Vector Layers...**. Click the **...** button next to the **Input Layers** box. Select the imported **msfsattronly** layer and the **Z Added** layer. After running it, you will get a layer called **Merged**.
- Select the **Merged** layer, and then open the Attribute Table . The table looks like this



1 Click the edit button to start editing the table

2 Select the field to mass-edit

3 Expression containing the value to mass-edit


	version	Uuid	Guid	Expression	OP	OP	OP	OP	MSBuilding	vegetation	LCRemap
1	NULL	NULL	NULL	NULL	NULL	NULL	NULL	NULL	NULL	NULL	NULL
2	NULL	NULL	NULL	NULL	NULL	NULL	NULL	NULL	NULL	NULL	NULL
3	NULL	NULL	NULL	NULL	NULL	NULL	NULL	NULL	NULL	NULL	NULL
4	NULL	NULL	NULL	NULL	NULL	NULL	NULL	NULL	NULL	NULL	NULL
5	NULL	NULL	NULL	NULL	NULL	NULL	NULL	NULL	NULL	NULL	NULL
6	NULL	NULL	NULL	NULL	NULL	NULL	NULL	NULL	NULL	NULL	NULL
7	NULL	NULL	NULL	NULL	NULL	NULL	NULL	NULL	NULL	NULL	NULL
8	NULL	NULL	NULL	NULL	NULL	NULL	NULL	NULL	NULL	NULL	NULL
9	NULL	NULL	NULL	NULL	NULL	NULL	NULL	NULL	NULL	NULL	NULL
10	NULL	NULL	NULL	NULL	NULL	NULL	NULL	NULL	NULL	NULL	NULL
11	NULL	NULL	NULL	NULL	NULL	NULL	NULL	NULL	NULL	NULL	NULL
12	NULL	NULL	NULL	NULL	NULL	NULL	NULL	NULL	NULL	NULL	NULL
13	NULL	NULL	NULL	NULL	NULL	NULL	NULL	NULL	NULL	NULL	NULL
14	NULL	NULL	NULL	NULL	NULL	NULL	NULL	NULL	NULL	NULL	NULL
15	NULL	NULL	NULL	NULL	NULL	NULL	NULL	NULL	NULL	NULL	NULL

Show All Features

- This is where we tell MSFS SDK what to do with the polygons. Below is a table which will explain which expressions you should use for each field. Press the **Update All** button to apply the expression to the field.

Field	Expression	Comment
version	'0.2.5'	
Uuid	uuid()	Generates an unique Uuid for all features.
Guid	'{00000000-0000-0000-0000-000000000000}'	Not sure what this does. Seems redundant, but might be left in for compatibility purposes.

falloff	200	This is the amount of smoothingMSFS will do around the flattening.200 is the default and it is a good-value, but you can experiment withthis.
flatten	1	This tells MSFS SDK to flatten the terrain inside the polygon. This is what ultimately does the terraforming.
DBuilding	0	
OBuilding	0	
MSBuilding	0	
vegetation	-1	
LCRemap	0	
Material	'{000000000-0000-0000-0000-000000000000}'	
ExcludeTIN	0	
BuildTIN	0	
Detected	0	
VegDensity	-1	
Layer	0	
VegFalloff	0	
IsWater	0	
WaterExcl	0	
WaterType	5	
AirprtSize	0	
EcoRegion	-1	
NaturalVeg	-1	
Intrntionl	0	
Artificial	0	
Brightness	127	

- Click the Remove field  button and remove the `path` field.
- Uncheck the Edit button to save the changes.

Exporting the scenery sources

- The last step is to export this data into MSFS scenery source file. To do this right click the

final `Merged` layer and select `Export > Save Features As...`. Save the name as `terrain` in the `gis` folder. Leave everything else as default.

- Now you can take the `terrain` -files it saved and overwrite the `terrain` -files in the `scene` folder.

Verifying that it works

- Next we need to attempt to load this scenery into the scenery editor. To do this, first, open the area in the simulator. Click `[DevMode] > Open Project...` and select the project `.xml` file you saved earlier.
- Next, in the Project Editor, select the `scene` asset.
- Click `Load in Editor`.
- This will load all the polygons. Depending on how big the area is, this might lag a lot!

Building the scenery

- Next, we need to build the scenery into a package that can be loaded.
- To do this, select the asset group above `scene` in the Project Editor.
- In the Inspector Window click `Build Package`.
- You will now have a ready-to-use package in the `<project-root>/Packages` folder. This folder can be moved to the simulator's `Community` folder, for the simulator to load.

Revision #17

Created Mon, Aug 31, 2020 8:29 AM by Henrik

Updated Wed, Sep 9, 2020 9:52 PM by Henrik